

# Anastomosis matching

- Proatlantal intersegmental a.
- Primitive hypoglossal a.
- Primitive otic a.
- Primitive trigeminal artery
- M/C persistent anastomosis
- Petrous ICA to basilar
- Cavernous ICA to basilar
- Joins basilar at level of PICA
- ICA to basilar anastomosis outside of skull

# Interconnections

---

- Septal nuclei to habenulla
- habenulla to interpeduncular nuclei
- amygdala to hypothalamus/septal nuclei
- hippocampus to mammillary bodies
- mammillary bodies to AN thalamus

# Internal Capsule Matching

---

- Anterior limb
- Posterior limb
- Genu
- None of the above
- Corticobulbar fibers
- Corticospinal fibers
- Anterior thalamic radiation
- Superior thalamic radiation
- Frontopontine fibers
- Corticofugal fibers

# The Thumb

- Abductor pollicis longus
- Abductor pollicis brevis
- Extensor pollicis longus
- Extensor pollicis brevis
- Opponens pollicis
- Flexor pollicis brevis - superficial head
- Flexor deep brevis - long head
- Adductor pollicis
- Ulnar nerve
- Median Nerve
- Radial nerve

# Zinn

---

- Which nerves enter the orbital apex but travel outside the annulus of Zinn?

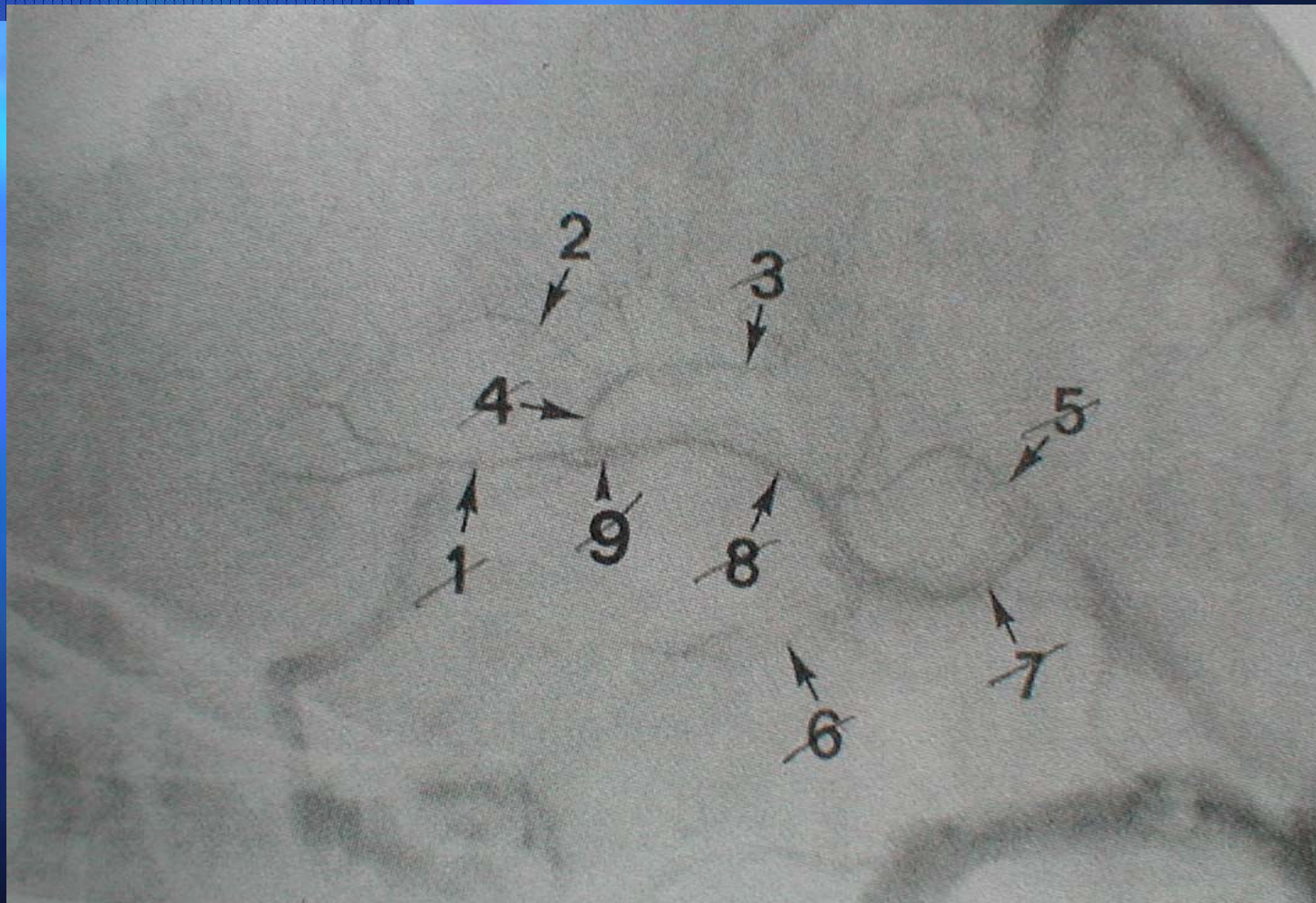
# ICA

- Name the branches of the petrous ICA
- Name the branches of the cavernous carotid artery
- Name the branches of the meningohypophyseal trunk
- Extra credit - name the segments of PICA

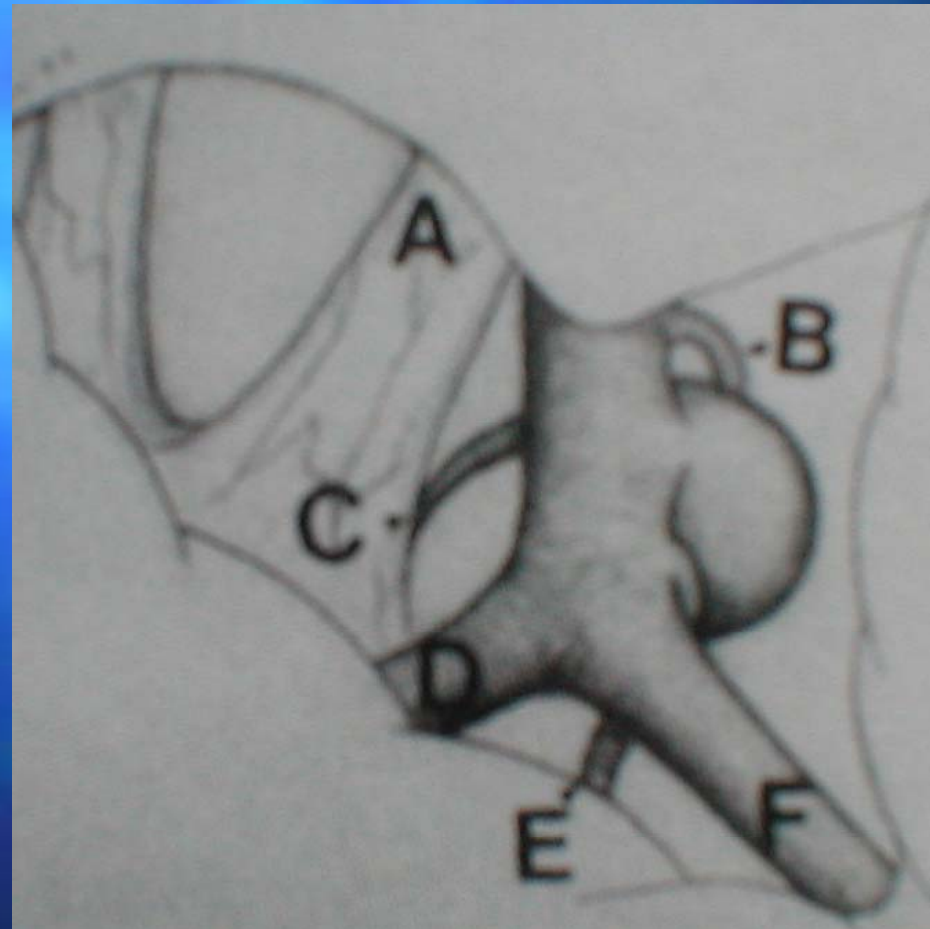
# Pupil Sympathetics

- Failure of a miotic pupil to dilate after instilling 2 drops of 10% cocaine followed by 1% hydroxyamphetamine indicates a:
  - 1st order Horner's syndrome
  - 2nd order Horner's syndrome
  - 3rd order Horner's syndrome
  - 1st or 2nd order Horner's syndrome
  - 2nd or 3rd order Horner's syndrome

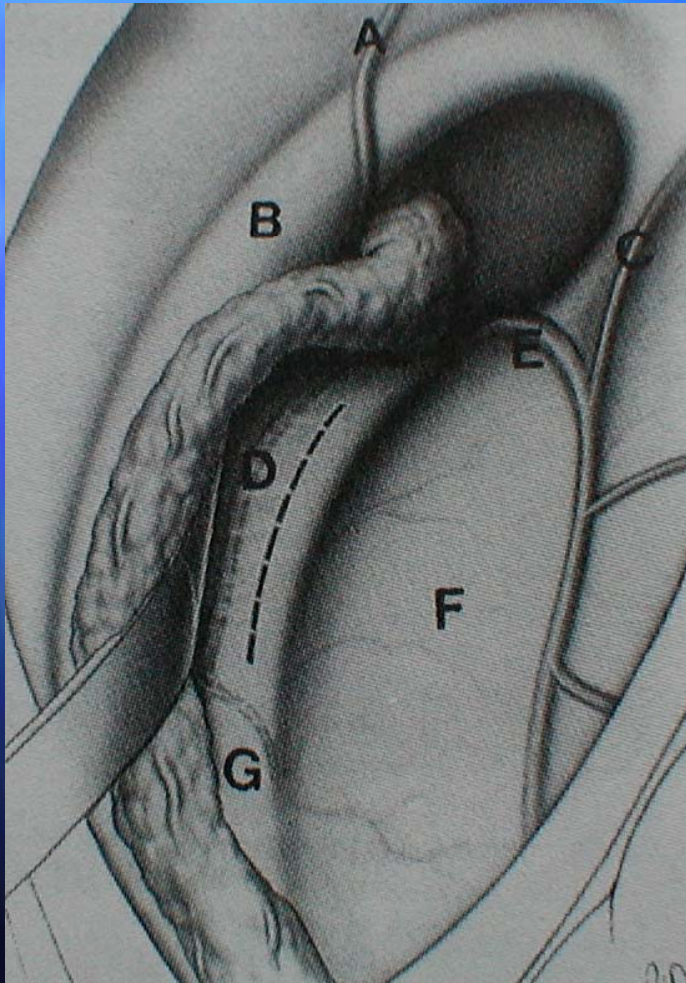
# Name the Veins



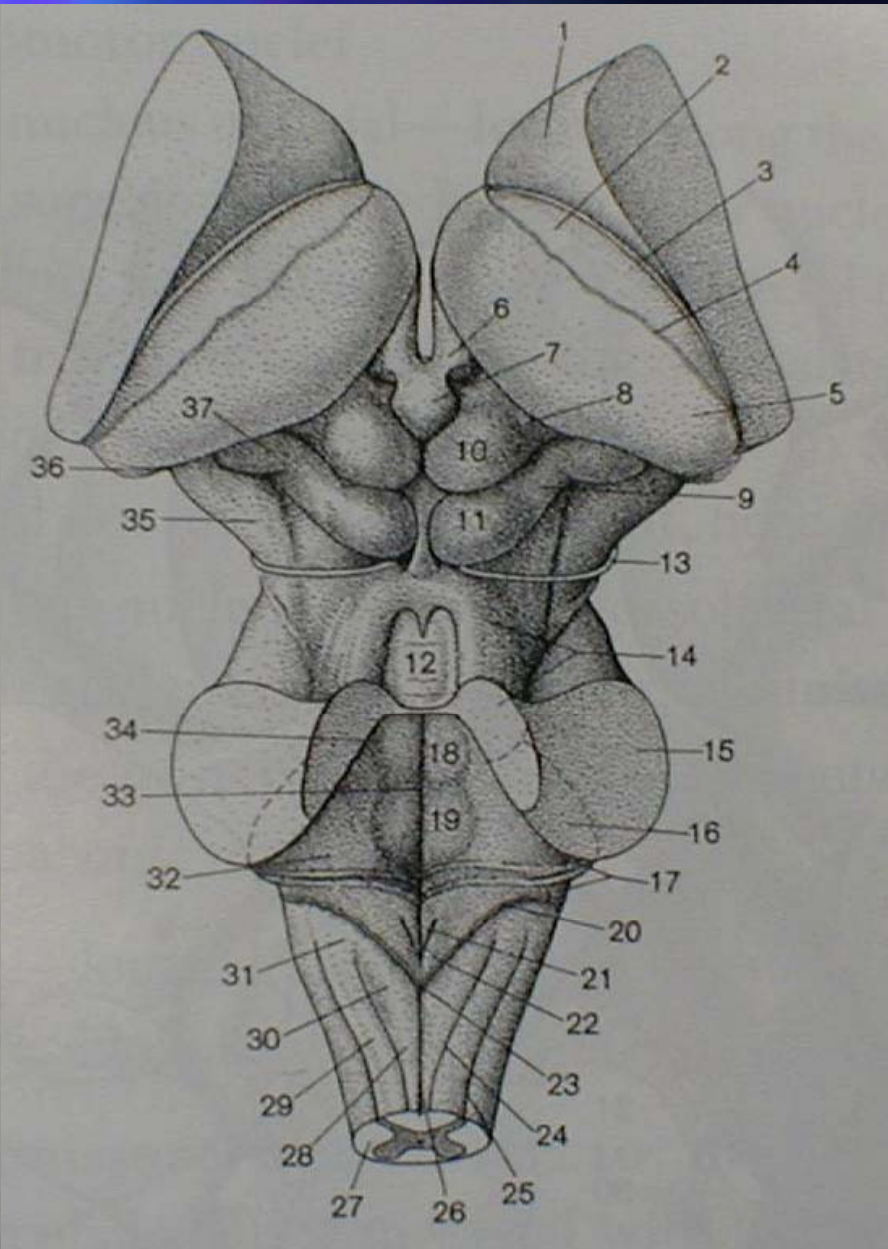
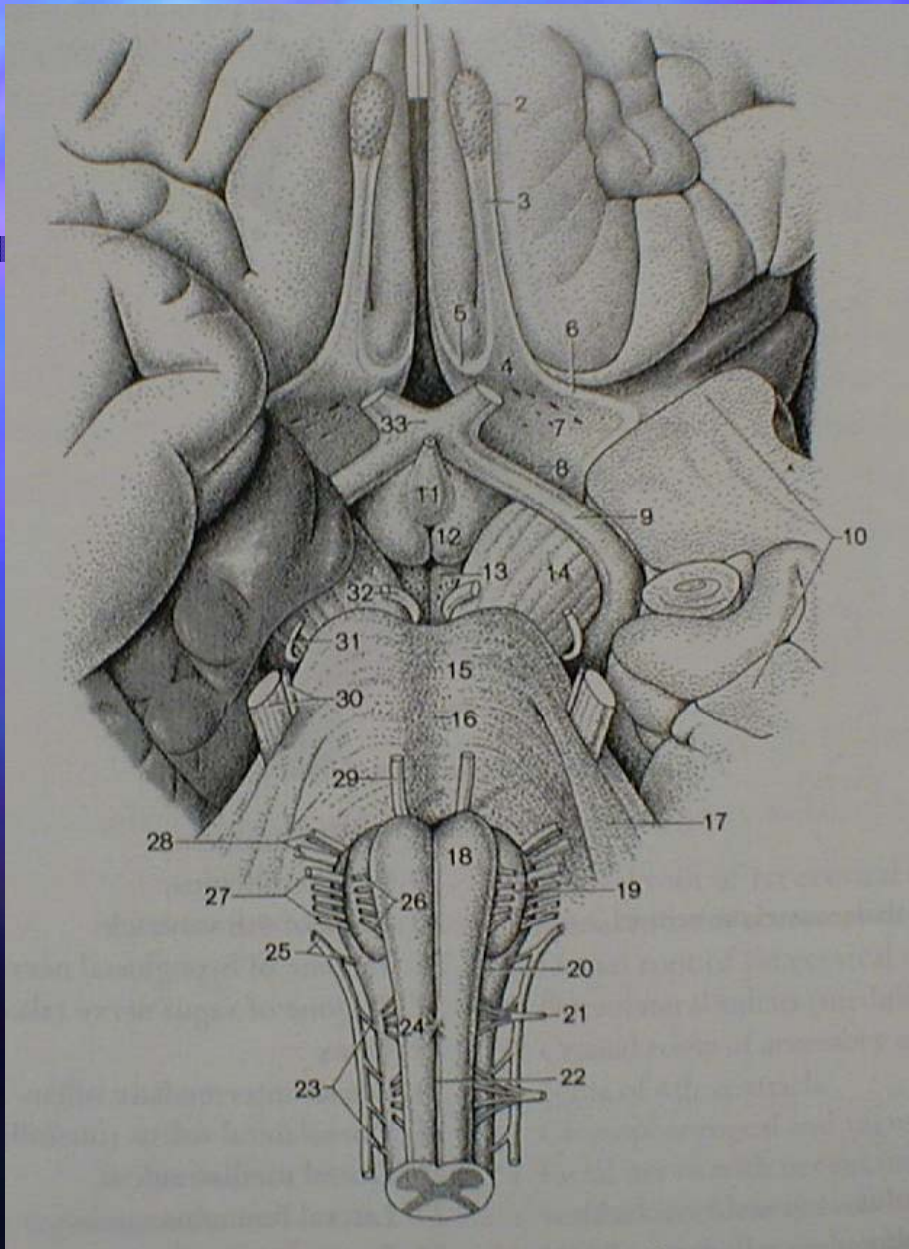
# Name the Fuzzy Structures



# Matching

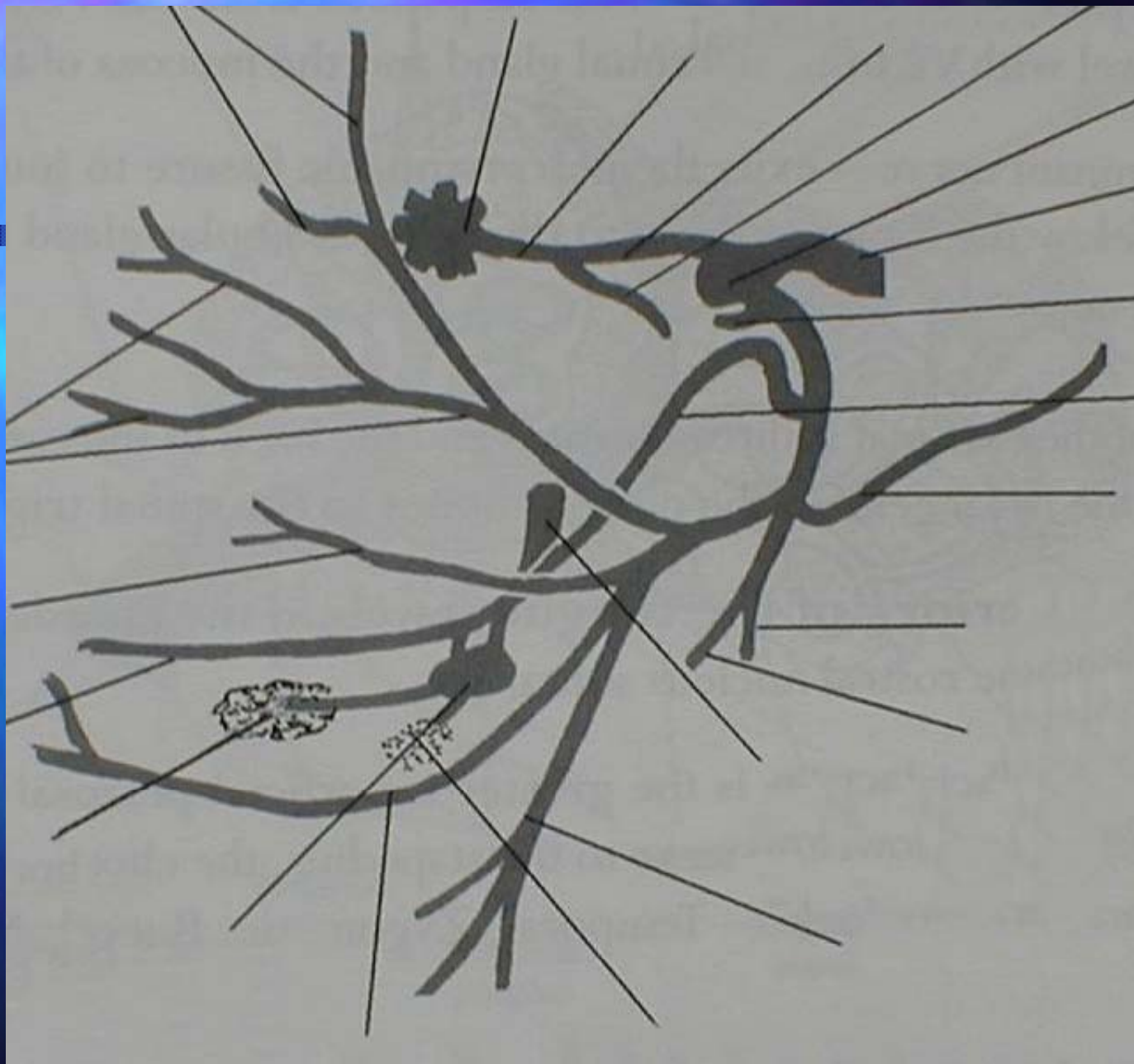


- 1. Ant caudate v
- 2. Fornix
- 3. Internal cerebral v
- 4. Septal v
- 5. Tela choroidea
- 6. Thalamostriate v
- 7. Thalamus



# More Connections

- Anterior Commissure
- Arcuate fasciculus
- Cingulate fasciculus
- Corpus Callosum
- Uncinate fasciculus
- Orbital frontal gyri with anterior temporal lobe
- Medial frontal and parietal lobes with parahippocampal region
- Superior and middle frontal gyri to temporal lobe
- Tapetum is derived from these fibers
- Interconnects middle and inferior temporal gyri between hemispheres



# Trigeminal Nuclei Matching

---

- Mesencephalic
- Motor
- Principal (chief) sensory
- Spinal
- Trigeminal ganglion
- Most rostral nucleus
- Most caudal nucleus
- Pressure and kinesthetic sense from teeth
- Consists of pars oralis, pars interpolaris, and pars caudalis

# What Function is Served by the Following Ganglia?

---

- Ciliary
- Geniculate
- Scarpa's
- Otic
- Spiral
- Gasserian
- Sphenopalatine

# What Fibers do the Following Nerves Carry?

---

- Short Ciliary
- Long Ciliary
- Splanchnic
- Nervi erigentes
- Pelvic and hypogastric plexi
- Pudendal